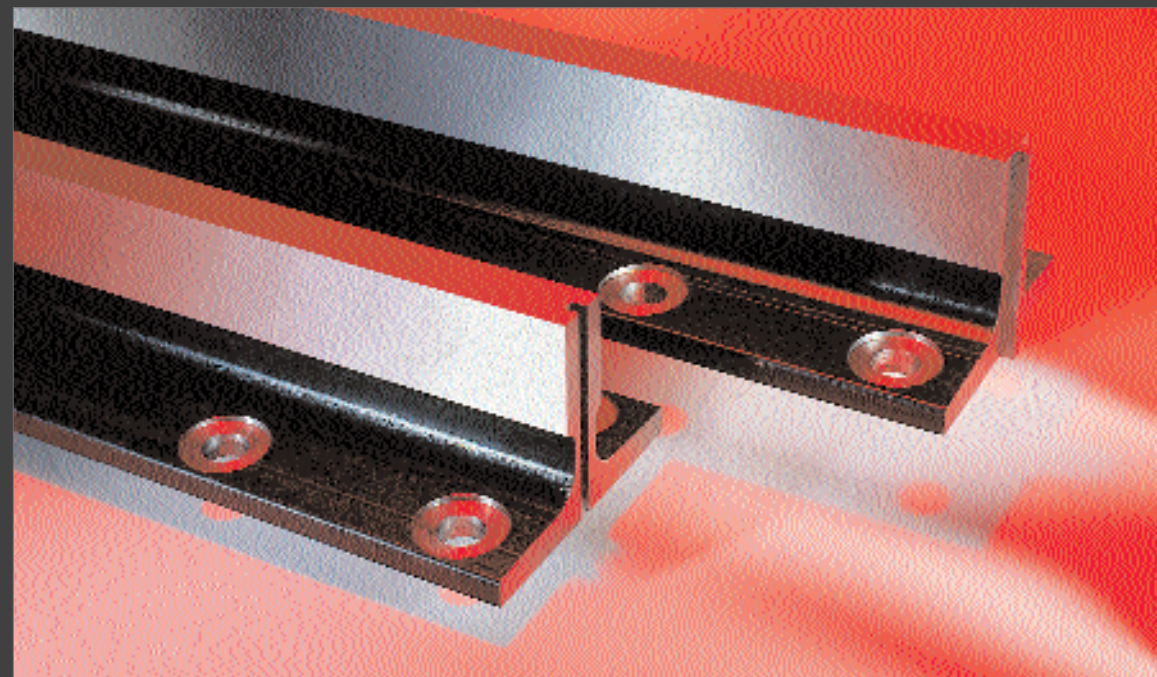




World Guide Rail Alliance



s p e c i f i c a t i o n s



High Speed Machined Guide Rails

USA/Canada

Monteferro America
Phone 1-866-222-0247
Fax (204) 224-4275
E-mail: sales@monteferroamerica.com

Italy

Monteferro S.p.A.
Phone: ++39-0332-970970
Fax: ++39-0332-971016
E-mail: customer.service@monteferro.it

Brazil

Monteferro América Latina L.T.D.A.
Phone: ++55-11-38744760
Fax: ++55-11-38744764
E-mail: mfalvend@aol.com

Czech Republic

Monteferro Hradek A.S.
Phone: ++420-181-725467
Fax: ++420-181-725477
E-mail: customer.service@monteferro.cz

China

Hebei Monteferro Guide Rails Co., L.T.D.
Phone: ++86-317-2029504
Fax: ++86-317-2026327
E-mail: montefer@public.czptt.he.cn

Hong Kong

Monteferro Pacific Trading Ltd.
Phone: ++852-25214225
Fax: ++852-25261393
E-mail: mfpt@hkstar.com

Printed in Canada

ISO 9002 certified since 1995

Monteferro America

High Speed Machined Guide Rails

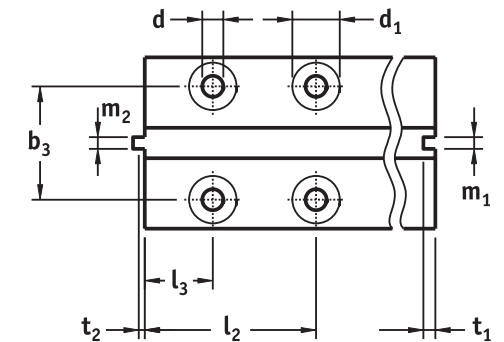
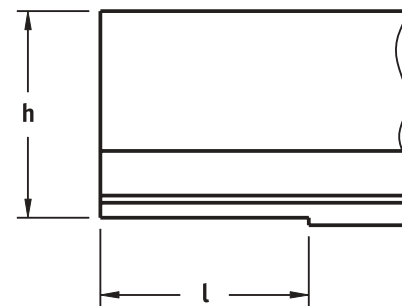
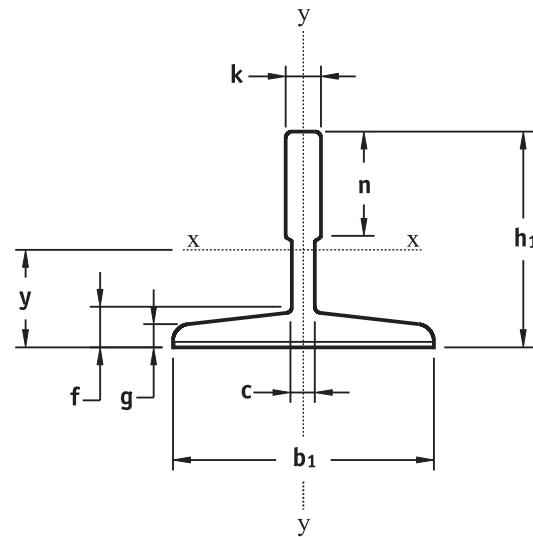
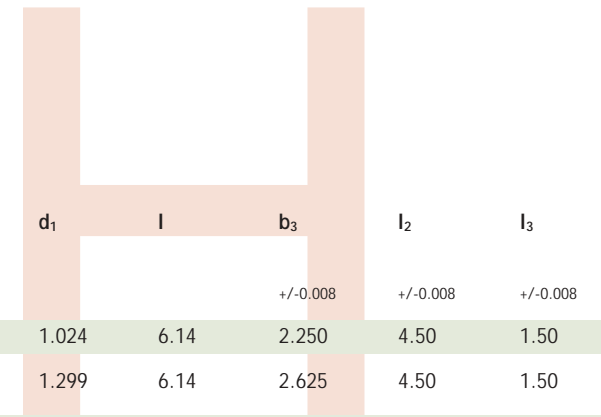


Monteferro's **High Speed** guide rails offer enhanced tolerances through precision manufacturing, desirable in high speed applications. These guide rails are manufactured in lengths of 16' and 5m. Custom lengths are also available.

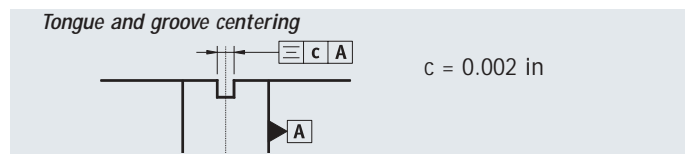
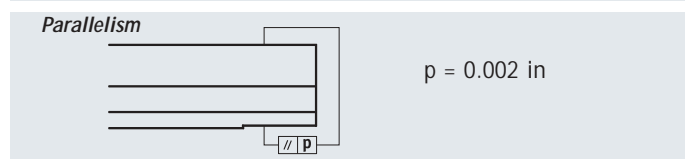
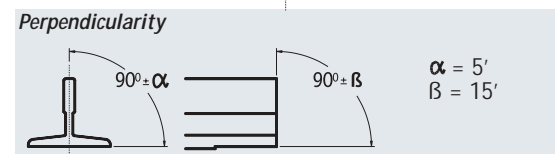
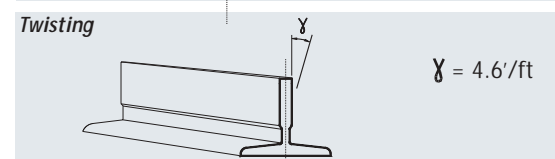
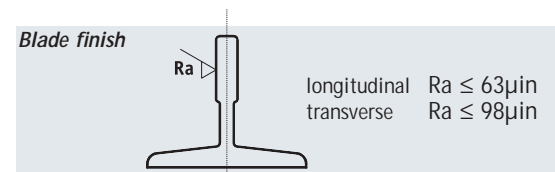
Dimensions

All dimensions in inches unless noted.

Monteferro Code	ISO Code	q ₁ lb/ft	b ₁	h ₁	h	k	n	c	g	f	m ₁	m ₂	t ₂	t ₂	d	d ₁	l	b ₃	l ₂	l ₃	
Tolerances				+/-0.06	+/-0.03	+/-0.002	+0.002, -0				+0.0012, -0	+0, -0.0014	+/-0.004	+/-0.004					+/-0.008	+/-0.008	+/-0.008
T89/B	T89/B	8.27	3.50	2.44	2.402	0.625	1.3125	0.375	0.313	0.4375	0.252	0.251	0.281	0.25	0.5625	1.024	6.14	2.250	4.50	1.50	
T114/B	—	11.12	4.50	3.50	3.465	0.625	1.5	0.375	0.313	0.4375	0.252	0.251	0.281	0.25	0.6875	1.299	6.14	2.625	4.50	1.50	
T127-1/B	T127-1/B	11.94	5.00	3.50	3.465	0.625	1.75	0.375	0.313	0.4375	0.252	0.251	0.281	0.25	0.6875	1.299	6.14	3.125	4.50	1.50	
T127-2/B	T127-2/B	15.11	5.00	3.50	3.465	0.625	2	0.375	0.500	0.625	0.252	0.251	0.281	0.25	0.6875	1.299	6.14	3.125	4.50	1.50	
T140-1/B	T140-1/B	18.55	5.50	4.25	4.213	0.748	2	0.5	0.500	0.625	0.252	0.251	0.281	0.25	0.8125	1.575	7.6	3.625	6.00	1.25	
T140-2/B	T140-2/B	22.79	5.50	4.02	3.976	1.125	2	0.6875	0.563	0.6875	0.252	0.251	0.281	0.25	0.8125	1.575	7.6	3.625	6.00	1.25	
T140-3/B	T140-3/B	30.91	5.50	5.00	4.961	1.250	2.25	0.75	0.688	1.000	0.252	0.251	0.281	0.25	0.8125	1.575	7.6	3.625	6.00	1.25	



Tolerances



Sectional properties

Monteferro Code	ISO Code	A in ²	q ₁ lb/ft	Y in	I _{xx} in ⁴	Z _x in ³	r _x in	I _{yy} in ⁴	Z _y in ³	r _y in
T89/B	T89/B	2.43	8.27	0.80	1.43	0.87	0.77	1.26	0.72	0.72
T114/B	—	3.22	11.12	1.13	4.30	1.81	1.16	2.59	1.17	0.90
T127-1/B	T127-1/B	3.51	11.94	1.08	4.47	1.86	1.13	3.56	1.43	1.01
T127-2/B	T127-2/B	4.44	15.11	0.97	4.77	1.89	1.04	5.53	2.21	1.11
T140-1/B	T140-1/B	5.46	18.55	1.28	9.71	3.26	1.33	7.45	2.70	1.17
T140-2/B	T140-2/B	6.70	22.79	1.37	10.98	4.15	1.28	8.60	3.12	1.13
T140-3/B	T140-3/B	9.08	30.91	1.72	22.90	6.99	1.59	11.68	4.24	1.13